



Success @ State

**“On the Banks of the Red Cedar,
there’s a school that’s known to all”...
And you are now a part of it!**

Don't miss
Fall Welcome Spartan Spectacular!
Tuesday, September 1, 2009
Munn Field
For more information visit
fallwelcome.msu.edu

Arrival Information

For those living in residence halls: Residence halls open at 8am on Sunday, August 30 for new students only. Returning residents may not move into the residence halls until 8am on Monday, August 31. Meal service for new students begins with breakfast on Sunday. Upon arrival at the residence hall, a staff member will provide directions for temporary parking for **unloading only**. The staff member will provide a special colored tag, which will outline where to park once unloading has occurred. In early August, those students who will be residing in on-campus housing will receive a packet of information regarding their housing arrangements from Campus Living Services. It is important to pay special attention to this information.
For commuter students: To access a copy of your personalized Fall Welcome schedule go to the Fall Welcome website at www.fallwelcome.msu.edu and log-in to print your schedule. You can pick up a copy of the *Fall Welcome Handbook* as early as Monday, August 24 in the Department of Student Life, located in 101 Student Services. If MSU is the first college or university you have attended on a full-time basis and you are a commuter, please join us in 108 Bessey Hall at 2:30pm on Tuesday, September 1, for the Freshmen Commuter Student Meeting. If you are a new transfer student who is commuting to MSU, please plan to attend the Transfer Student Meeting at 1:30pm on Monday, August 31 in McDonel Hall Kiva. Please contact the Department of Student Life at stulife@msu.edu or 355-8286 with any questions.

Congratulations on choosing to be a part of one of the finest institutions of higher education in the nation! Your time at MSU will produce some of the most memorable moments of your life. Whether it is a class that captivates your mind, exploring your interests by getting involved in a student organization, sampling the ice cream at the MSU Dairy Store, cheering the Spartans to victory, or meeting new friends, your time at MSU will indeed be special. The intent of the short articles contained in this newsletter is to provide some information about what you (and your parents) can expect when you arrive on campus. Also, check out fallwelcome.msu.edu for information on your first few days at MSU!

\$partan Money \$marts

Tuition, books, recreation, food...it all costs money. There is no single answer to questions about money and how much it costs to be a student at MSU, but there are some general guidelines that may help you in making financial decisions.

Make a list of anticipated expenses. From this list, families should decide which are covered by the student, which by the parent/guardian, etc. There is no one right answer to who should pay for which part of college, but knowing ahead of time may alleviate a lot of tension later.

Credit Cards. Students will receive countless offers to get a credit card. Some students find credit cards a safe and convenient means of payment. Others, however, if not careful, find themselves owing significant money to the credit card company. As such, students and parents are encouraged to discuss credit card use prior to arrival on campus. In cases where a student obtains credit cards for “emergencies,” everyone should agree what constitutes an emergency.

Working while enrolled in school. The decision to work depends on a variety of factors such as class load, job demands, financial need, and the individual student. Students who are good managers of their time and take no more than 15 credit hours per semester may be able to work ten to twenty hours per week. In fact, research indicates that working less than twenty hours per week in an on-campus job helps students become better acquainted with the institution and complements their academic learning. Students are encouraged to make school their top priority. However, with proper time management, students can enjoy sufficient time to prepare for their classes, socialize, participate in extracurricular activities, and work.

To learn more about part-time student jobs, contact the Michigan State University Student Employment, 113 Student Services or 110 Nisbet Building, (517) 353-9510, or visit their website at www.careernetwork.msu.edu/students.

Dear New Spartan,

MSU is looking forward to your arrival to campus, and we are ready to offer you an experience that can be one of the best of your life! Our world-class academic programs, our many services and resources, our beautiful campus, the quality of our advisors and professors, the exposure to other community members from diverse cultures and backgrounds, and the excitement of Big Ten Conference athletics, all combine to create an unequalled pride in the hearts of MSU students.

MSU cares about your success as a student. We hope you will immerse yourself in your academic program, get involved in student organizations, and attend special events and activities to make the most of your undergraduate experience at MSU.

We look forward to seeing you soon!

—MSU Faculty and Staff

Visit fallwelcome.msu.edu for information on all Fall Welcome Activities.

**First Year and
New Students
and Family
August, 2009**

*This is the first
in a series of
newsletters
designed to
enhance your
transition to
Michigan State
University.
Subsequent editions
will be available
on-line at the
Department of
Student Life website
studentlife.msu.edu
on October 9, 2009,
November 30, 2009,
January 15 2010,
and April 9, 2010.*



Department of
Student Life
101 Student Services
East Lansing
Michigan
48824
studentlife.msu.edu

Fall Welcome -August 30-Sept 2

Fall Welcome is a continuation of your orientation to Michigan State University. Throughout the three days of Fall Welcome, many exciting (and fun) events will occur across campus. By attending these events, you will become better acquainted with the campus, meet other students, and begin forming connections to MSU's faculty and staff members who are here to help you succeed.

For those new students who will be living in residence halls, a copy of the 2009 *Fall Welcome Handbook* will be given to you once you move into your residence hall. The handbook will provide specific information regarding Fall Welcome activities as well as resources on campus and the East Lansing community. For new students residing on campus, Fall Welcome begins on **Sunday, August 30**. You may begin moving into your new on-campus home at 8am. The first official Fall Welcome activity for on-campus students will take place at 5pm when you will meet the other new students on your residence hall floor for dinner. After dinner, hall and floor meetings occur as a way of providing you with some basic information about your new living community. If you are a new student at MSU, but are transferring to MSU from another college or university, please make plans to attend the Transfer meeting that will occur Monday, August 31 at 1:30pm.

All new students can view and print their *individualized* Fall Welcome schedule at fallwelcome.msu.edu and can pick up a copy of the *Fall Welcome Handbook* as early as Monday, August 24 in the Department of Student Life, located in 101 Student Services.

If you are interested in getting involved, but not sure how to go about it, check out the list of Registered Student Organizations that is available on the Department of Student

Life's website at studentlife.msu.edu. The list has contact information for most of the over 660 organizations. Would you rather meet with some of the organizations' membership in-person? Then plan to attend **Fall Welcome Spartan Spectacular** at Munn Field on Tuesday, September 1 to be a part of **Sparticipation '09**. (For more information visit fallwelcome.msu.edu.)

Fill the Bus!

*Spartans give of themselves,
to others, in community,
for the public good.*

Be a part of a campus-wide service effort to support organizations in the greater Lansing community. When buying your supplies, buy an extra to fill the bus.

For more information visit: servicelearning.msu.edu/fillthebus.

Student Identification Cards

Students who have not had an ID picture taken prior to August 29 are to do so in the International Center on August 30 & 31 and September 1 & 2, 8am-5pm. Replacement cards, should they be necessary, may be obtained from the Registrar's Office, Room 50 Administration Building. There is a replacement charge of \$20.

Insurance

It is recommended that all students be covered by a health insurance plan. For students who are covered by the plan of a parent, guardian, or partner, it is recommended that the insurance carrier be contacted to confirm continuation of coverage once the student arrives on campus. For students who do not currently have health insurance, but would like it, MSU offers a plan designed specifically for students. Contact the MSU Benefits Office at (517) 353-4434 or on-line at www.hr.msu.edu/benefits/studenthealth/index.htm

Check Out the Study Abroad Fair

Thinking about studying abroad? The Office of Study Abroad is hosting its annual Study Abroad Fair during fall semester on Thursday, September 24th. The fair runs from noon until 6pm and fills the entire second floor of the MSU Union. Walk through the fair at your leisure, talk with professors, chat with former participants, and see amazing photos and interesting artifacts from around the world. Hundreds of exhibits displaying information about almost all of MSU's study abroad programs will provide you with a "one-stop shopping" experience!

Majors from accounting to zoology to no preference have taken courses across the globe and traveled to over 60 countries. With more than 260 programs, there is a diverse

selection of courses and locations. Come see how you can plan your study abroad experience and stay on track for graduation!

Staff from the Office of Study Abroad, the Office of Financial Aid, the MSU Travel Clinic, the Resource Center for Persons with Disabilities, and the MSU Federal Credit Union will be available at the fair to help with questions about travel logistics, funding opportunities (including the MSUFCU Scholarship), and health and safety issues. Academic advisers will also be on hand to answer questions about individual degree requirements. Special giveaways, a live broadcast from 97.5 FM, a raffle and a visit from Sparty round out the fun at the September fair.

For more information, visit studyabroad.msu.edu.

Billing/Financial Aid Information (517) 353-3343 • 800-775-4323

The first bill for the fall semester was produced in late July. Your attendance confirmation and payment, if any, is due in the first part of August. (The specific due date will appear on the billing statement.) You must confirm attendance on-line regardless of the amount due (credit balance, balance due, or zero balance) to become registered. If you have a balance due, you must submit the minimum payment amount, either by mail or on-line using the ePay system, or a late fee will be assessed. You may pay an electronic bill on-line by credit card or ACH funds transfer and confirm attendance at stuinfo.msu.edu.

Students Receiving Financial Aid: www.finaid.msu.edu

Your bill reflected any actual or pending financial aid awarded at the time the bill was processed, except for Student Employment or College Work Study awards, which must be earned by part-time work during the academic year. Private scholarship checks are disbursed according to instructions received from the donor. Stafford or Parent Loans are paid directly to your student account once you have completed your promissory note. Funds also may be directly deposited into any checking or savings account. Students may enroll in direct deposit on-line at stuinfo.msu.edu.

Refunds of Financial Aid: If you have completed registration and have excess financial aid, which has been finalized as of August 21, 2009 you will be mailed a refund check the week of August 24. Checks go to your local address, if one is available. Otherwise they are sent to your permanent address. For students who complete registration after August 24, refunds will be produced nightly starting on August 24 and mailed the following workday through September 4, and then weekly thereafter. If you have signed up for Direct Deposit, the funds will be transferred to your bank account rather than being mailed.

Questions about your bill or payment? Students with questions about their bill or payment may contact the Student Accounts Office, which is a part of the Controller's Office, Room 140 Administration Building, (517) 355-3343, www.ctr.msu.edu.

I'm part of the "school that's known to all" now what?

Confidentiality of Student Records

Many students and parents assume that information such as grades and records of a student's involvement with the University's judicial process are treated the same way as it was in high school. This is not the case.

Once a student enters the University, all privacy rights are vested with the student. The Family Educational Rights and Privacy Act, otherwise known as FERPA, (www.ed.gov/policy/gen/guid/fpco/index.html) governs the release of a student's educational information. FERPA holds that, except for "directory information," the information contained in a college student's educational record is protected and may be released only under certain circumstances.

"Directory information" includes:

- Student name
- Dates of attendance at institution
- Degrees granted and the dates they were conferred
- Major
- School
- Level
- Permanent address
- Local address
- Telephone number

Students also have the right to request that "directory information" not be released.

Campus Bus Service

The Capital Area Transportation Authority (CATA) provides bus service to all of the greater Lansing area and to MSU. With a valid student ID, MSU students may ride the bus for \$.60 each ride. Students wanting to purchase a bus pass instead of paying for each ride have several bus pass options. Passes exist for all of CATA's routes, on and off campus, campus only routes, and a route that loops between the commuter lot, located at the corner of Mt. Hope Road, Farm Lane, and the parking ramp on Shaw Lane across from Shaw Hall. For specific information regarding CATA's routes and bus pass information, please call (517) 432-2282 or visit CATA's website at www.cata.org

Parking On Campus

Entering students with freshmen academic standing and who are residing in residence halls generally are **not** permitted to have vehicles on campus. Commuter students who plan to drive to and park on campus must register their vehicles with the MSU Police. Questions related to parking should be directed to the MSU Department of Police and Public Safety, (517) 355-8440. The MSU Police website, www.police.msu.edu, also contains useful parking-related information.

Personal Problems

No matter how experienced, mature, and emotionally stable students are, there will be times

when feelings and thoughts associated with life issues may become uncomfortable for students to handle alone. If students don't feel they are making progress toward resolving it in a few weeks, they may talk to someone about it.

The Counseling Center offers MSU students services for a variety of personal challenges including depression, substance abuse, stress, family relationships, career decision making, cultural identity, lesbian/bi/gay/transgendered issues, interpersonal conflicts, and sexual assault. Students can call for a consultation with one of the staff members.

Contact the Counseling Center at (517) 355-8270 or check out their website at www.couns.msu.edu

Relationships

Dating offers opportunities to create satisfying relationships, foster understanding, and enhance awareness of preferences and needs. It also presents possibilities for disappointment, rejection, and in some cases, abuse.

Students should concentrate on building friendships in dating—get to know other people, develop new interests, and establish open and honest communication instead of focusing solely on romantic attachment or physical attraction. Remember, dating provides you with the opportunity to discover positive qualities and to identify means for personal growth.

Acquaintance Rape

Acquaintance rape is sexual assault without consent involving a friend, a date or an acquaintance. Educational programs about acquaintance rape and sexual assault are offered on campus during the year. If a friend comes to you for help after a sexual assault situation it is important that you believe that person and help them get the resources that will help them by calling the 24 Hour Sexual Assault Crisis Hotline at (517) 372-6666.

Tips to Prevent Acquaintance Rape

- Be aware that acquaintance rape does happen.
- Decide what your own sexual limits are and clearly communicate them.
- Respect the limits of others.
- Do not have sex unless your partner has clearly consented.
- Limit alcohol intake; alcohol impairs judgement and clear communication.
- Do not let peers influence you to do something you'll regret.
- Trust your instincts. If the situation doesn't seem right to you, it probably isn't!
- Contact the Sexual Assault Program in the Counseling Center to learn more!

Academic Integrity

The General Student Regulations are a collection of statements about what is and is not acceptable behavior on the part of MSU students. Section 1.00 outlines expectations related to academic integrity:

The principles of truth and honesty are fundamental to the educational process and the academic integrity of the University; therefore, no student shall:

- Claim or submit the academic work of another as one's own.
- Procure, provide, accept, or use any materials containing questions or answers to any examination or assignment without proper authorization.
- Complete or attempt to complete any assignment or examination for another individual without proper authorization.
- Allow any examination or assignment to be completed for oneself, in part or in total, by another without proper authorization.
- Alter, tamper with, appropriate, destroy, or otherwise interfere with the research, resources, or other academic work of another person.
- Fabricate or falsify data or results (p. 77, *Spartan Life*).

Students are encouraged to discuss questions about academic integrity with their faculty and/or instructors. It is expected that, students know and follow the regulations governing academic integrity at MSU.

Quick Phone Contacts

(all numbers in area code 517 unless specified)

Questions?	Program/Office/Service	Phone
Campus Operator		355-1855
Counseling		355-8270
E. Lansing Housing Codes		319-6870
Employment		355-9520
Fall Welcome		355-8286
Financial Aid		353-5940
Fraternities/Sororities		355-8286
General Questions/Info		355-8286
Health		355-4510
Library		353-8700
Cultural Issues		353-7745
Ombudsman		432-7153
On-Campus Housing Options		353-8830
Parking		355-7457
Rental Housing -		355-2221
Legal Questions		336-8088
Safety		353-3716
Sporting Events		355-2221
Student Organizations		355-1610
Summer Courses		355-8286
Off Campus		MSU SummerStudy 1-800-496-4678
Wharton Center Events		Wharton Center Box Office 432-2000

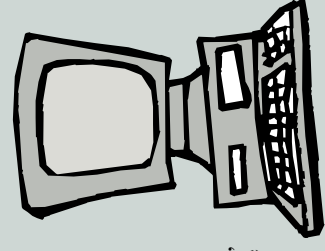
Did You Know...

All MSU undergrads are **required** to submit an Immunization Self-Report form.

Failure to complete this requirement will affect a student's ability to register and enroll.

- Go to immunize.msu.edu
- Contact uphys@msu.edu or call (517) 353-9101 with questions.

If you have already completed this form and have recently gotten a hepatitis B, chickenpox, meningococcal or tetanus/diphtheria/pertussis, hepatitis A or measles/mumps/rubella vaccination, please visit the site to **update** your record.



Thank you for attending to this important health matter!

Department of Student Life
101 Student Services Building
East Lansing, Michigan 48824
studentlife.msu.edu

REMEMBER: Wednesday September 2, 2009 attend Monday Classes.

MSU is an affirmative-action, equal-opportunity employer.